

Renal Cell Cancer

This section is a stub and needs content added.

2019/07/08 14:03 · Graham Grove

Clinical Features

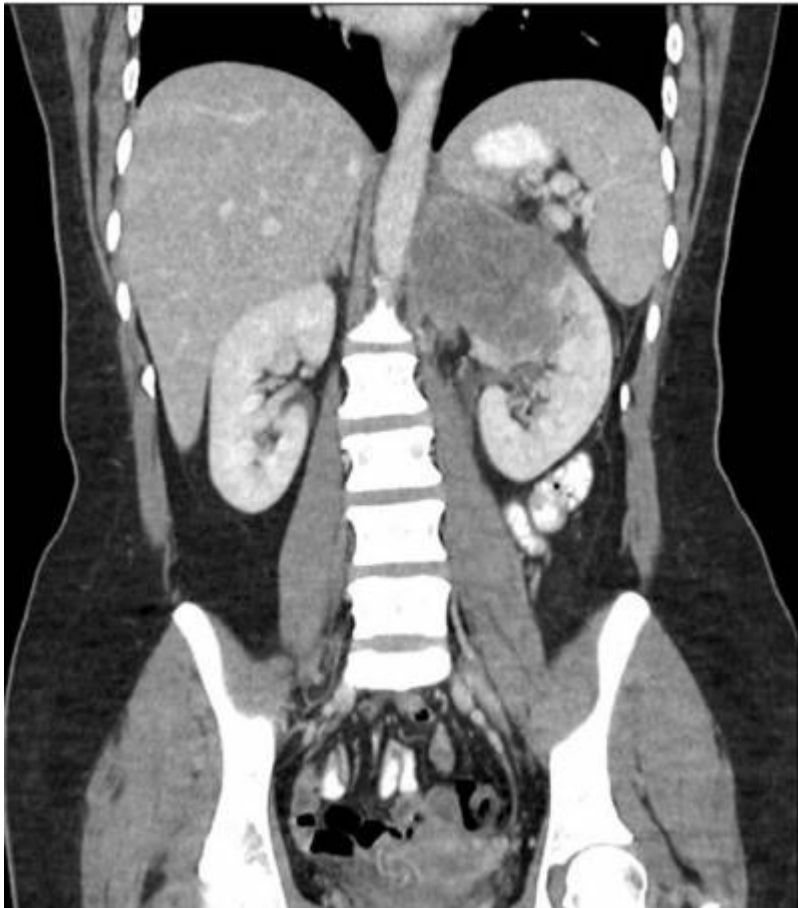
This section is a stub and needs content added.

2019/07/08 14:03 · Graham Grove

Investigations

This section is a stub and needs content added.

2019/07/08 14:03 · Graham Grove





Management

This section is a stub and needs content added.

2019/07/08 14:03 · Graham Grove

Prognosis

For patients with resectable disease, cure is possible. For patients with unresectable or recurrent and metastatic disease, renal cell cancer becomes a palliative illness. In recent years, with the advent of effective treatments such as sunitinib and sorafenib, people are living longer.

Some of the negative prognostic factors include:

- A poor performance score (AKPS of 70 or less)
- Biochemical abnormalities, including
- A raised LDH > 1.5 times normal
- A raised corrected calcium (> 2.5)
- A low haemoglobin (below the lower limit of normal)
- No previous nephrectomy (that is, locally advanced disease that could not be resected as opposed to recurrent disease post surgery)

Certain histological sub-types of renal cell cancer are associated with a poor prognosis too. Patients with sarcomatoid features generally have a poorer prognosis. In one study, approximately 20% of patients with this cancer had a partial response to treatment, 50% had a stable disease and 30% had

progressive disease, with a overall median survival of 5 months.¹⁾

[condition](#), [oncology](#), [urology](#), [kidney](#), [textbook](#)

¹⁾ Golshayan et al. Metastatic sarcomatoid renal cell carcinoma treated with vascular endothelial growth factor-targeted therapy. Clin Oncol. 2009; 27(2):235.

From:

<https://www.palliative.tools/wiki/> - **Palliative Tools**

Permanent link:

https://www.palliative.tools/wiki/doku.php?id=renal_cell_cancer

Last update: **2019/07/09 23:23**

